

FEATURES:

- Meet IEEE 802.3 and ANSI X3.263 standards including 350 uH OCL with 8mA Bias



YUAN DEAN SCIENTIFIC



LAN Filters

036F SERIES

100/1000 Base-T

Dual Port

36PIN DIP

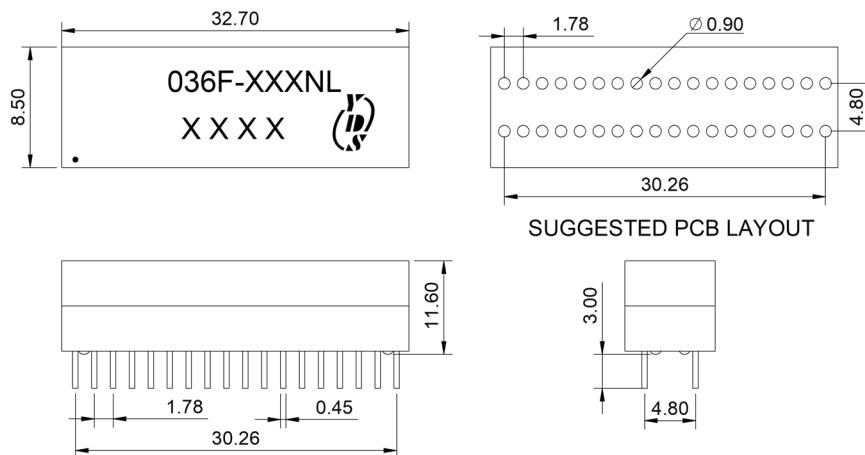


Electrical Specifications@25°C-Operating Temperature 0°C to 70°C

Part Number	Turns Ratio (±5%)	LK (uH MAX)	Cw/w (pF MAX)	D.C.R (ΩMAX)	Insertion Loss (dB MAX)	Return Loss (dB MIN)				Crosstalk (dB TYP)				Hipot V _{rms} MIN
	TX	100KHz/ 0.2V	100KHz/ 0.2V	-----	0.1-100 MHz	1-30 MHz	40 MHz	50 MHz	60-80 MHz	1 MHz	30 MHz	60 MHz	100 MHz	
036F-01ANL	1CT:1CT	0.5	120	1.2	-1.0	-18	-14.4	-13.1	-12	-50	-40	-35	-30	1500

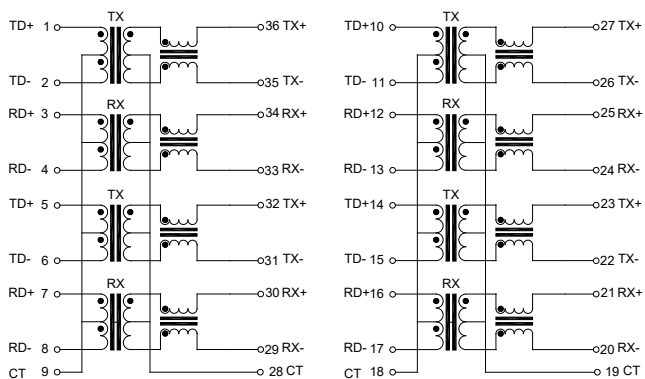
Mechanicals and Dimensions

DIP



Schematics

036F-01



036F-02

