

**FEATURES :**

- 10W DIL Package
- 4:1 Wide Input Range
- 100% Burned In
- High Efficiency Up to 87%
- Customized Solutions Available
- Remote Control: On/Off
- UL94V-0 Package Material
- Operating Temperature From -40°C to +87°C
- 3 Years Warranty

Specifications typical at TA=25°C, nominal input voltage and rated output current unless otherwise specified

Part Number	Input Voltage	Input Current (mA TYP)		Output Voltage	Output Current	Efficiency
	Vdc	No Load	Full Load	Vdc	Full Load (mA)	%TYP
68DW10-24S03R6	9-36	50	393	3.3	2400	84
68DW10-24S05R6	9-36	40	496	5	2000	84
68DW10-24S12R6	9-36	20	483	12	830	86
68DW10-24S15R6	9-36	20	474	15	660	87
68DW10-24D12R6	9-36	20	483	±12	±415	86
68DW10-24D15R6	9-36	20	474	±15	±330	87
68DW10-48S03R6	18-75	30	196	3.3	2400	84
68DW10-48S05R6	18-75	40	248	5	2000	84
68DW10-48S12R6	18-75	10	241	12	830	86
68DW10-48S15R6	18-75	10	237	15	660	87
68DW10-48D12R6	18-75	10	241	±12	±415	86
68DW10-48D15R6	18-75	10	237	±15	±330	87

**Input Specifications**

Parameters	Conditions	Min	Typ	Max	Units
Voltage Types				4:1	%
Filter			PI Network		
Protection	Fuse Recommended				

YUAN DEAN SCIENTIFIC



DC-DC Converter

68DW10-R6 SERIES

10Watt 1.5KV Isolated

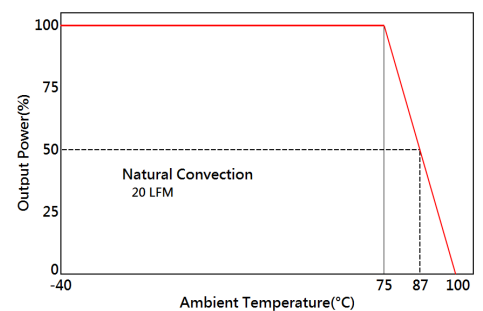
4 : 1 Input Voltage Range

Single & Dual Output

1" x 1"



Temperature Derating Graph



**Output Specifications**

Parameters	Conditions	Min	Typ	Max	Units
Voltage Tolerance	Full load @Vin(nom.)			±2	%
Short Circuit Protection	Hiccup, automatic Recovery				
Line Regulation				±0.5	%
Load Regulation	Single Dual (Balance Load)			±0.5 ±1	%
Cross Regulation	Dual (25% To 100% Load)			±5	%
Ripple & Noise	Output:3-15V TYPES BW=DC To 20MHz			100	mVp-p
	Output > 15V TYPES BW=DC To 20MHz			1% of Vout	mVp-p
Transient response setting time	25% load step change		300		us
External Trim Adj. Range				±10	%

**General Specifications**

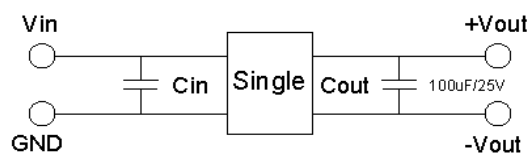
Parameters	Conditions	Min	Typ	Max	Units
Isolation Voltage			1500		Vdc
Isolation Resistance	500Vdc	1000			MΩ
Switching Frequency			400		KHz
Operating Temperature	With derating	-40		87	°C
Storage Temperature		-55		125	°C
Case Temperature				105	°C
Humidity	Non Condensing	5		95	%
Cooling	Natural Convection (20LFM)				
Case material	Nickel coated copper with no-conductive base				
MTBF	MIL-HDBK-217F @25°C	560000			Hours
Weight			16.5		g
Dimensions			25.4x25.4x10.6		mm

**Part Number**

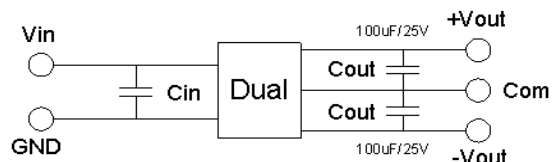
68DW10 - 24 S 05 R 6  
A B C D E F

- A: Series
- B: Input Voltage
- C: Single Output(S),Dual(D)
- D: Output Voltage
- E: Regulated (R)
- F: Package

**Recommended Test Circuit**

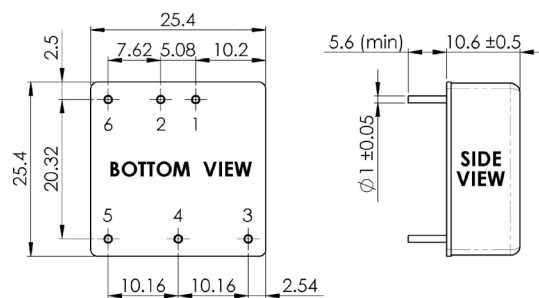


24V&48V: Cin 10uF,100V



24V & 48V :Cin 10uF,100V

**Dimensions**



Unit : mm  
Tolerance : XX.X ± 0.5 , XX.XX ± 0.25

**PIN Assignment**

Pin	1	2	3	4	5	6
Single	+Vin	-Vin	+Vout	Trim	-Vout	Remote On/Off
Dual	+Vin	-Vin	+Vout	Com	-Vout	Remote On/Off

